

Replace T type clutch kit with L-handle

**COMEUP
WINCH**

Seal Gen2 16.5



1 Using a 6mm Allen wrench, remove the twelve M8 socket head cap screws holding from the gear housing.



2 Move the gear housing to have a gap around 20mm.

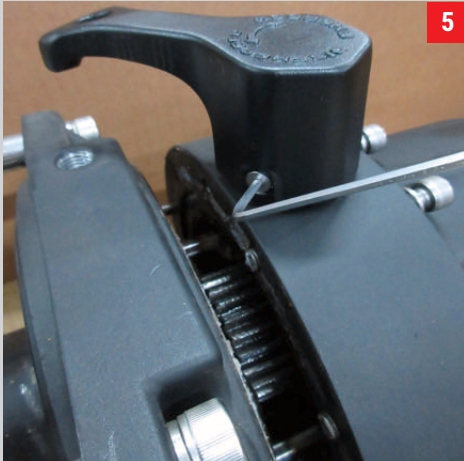
Using a 2.5mm Allen wrench, loosen the M5 socket set screw securing the T-handle treads in the gear housing.



3 Remove the T-handle from the gear housing.



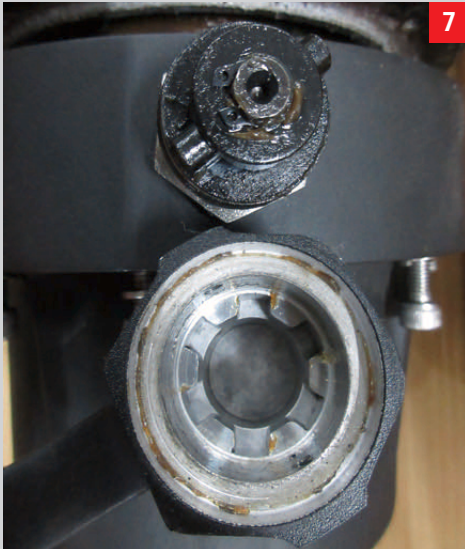
- 4** Thread the L-handle (PN: 883239) into the gear housing making sure it is completely threaded into the housing. The final L-handle position could be adjusted in the following steps.



- 5** Once the L-handle is threaded completely into the housing remove the two M4 socket countersunk head screws with a 2.5mm Allen wrench.



- 6** Lift the L-handle from the clutch mechanism.



7

The L-handle can be set in any of the 6 equally spaced, keyed locations.



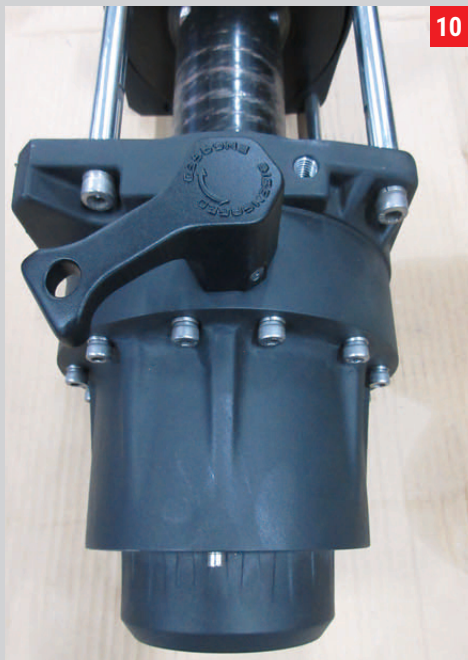
8

Once the L-handle is set to the desired orientation replace the two M4 socket countersunk head screws securing the L-handle to the clutch mechanism using a 2.5mm Allen wrench to tighten.



9

Using a 2.5mm Allen wrench, tighten the M5 socket set screw securing the clutch mechanism threads into the gear housing.



10

Put back the gear housing to complete the installation.